

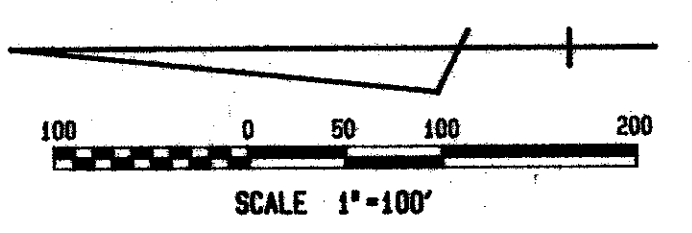
A PART OF LAKE CHARLESTON PLANNED UNIT DEVELOPMENT

LAKE CHARLESTON PLAT NO. 3

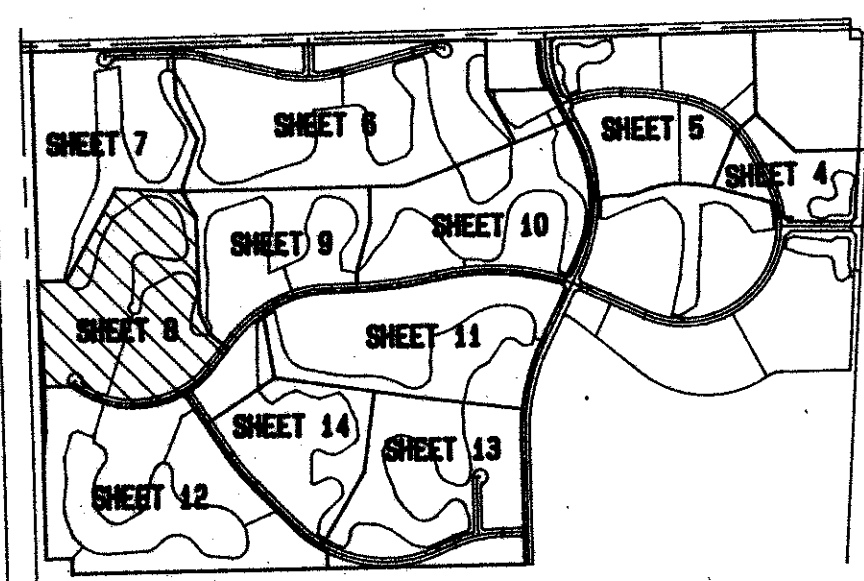
IN 14 SHEETS

SHEET NO. 8

JUNE 1988



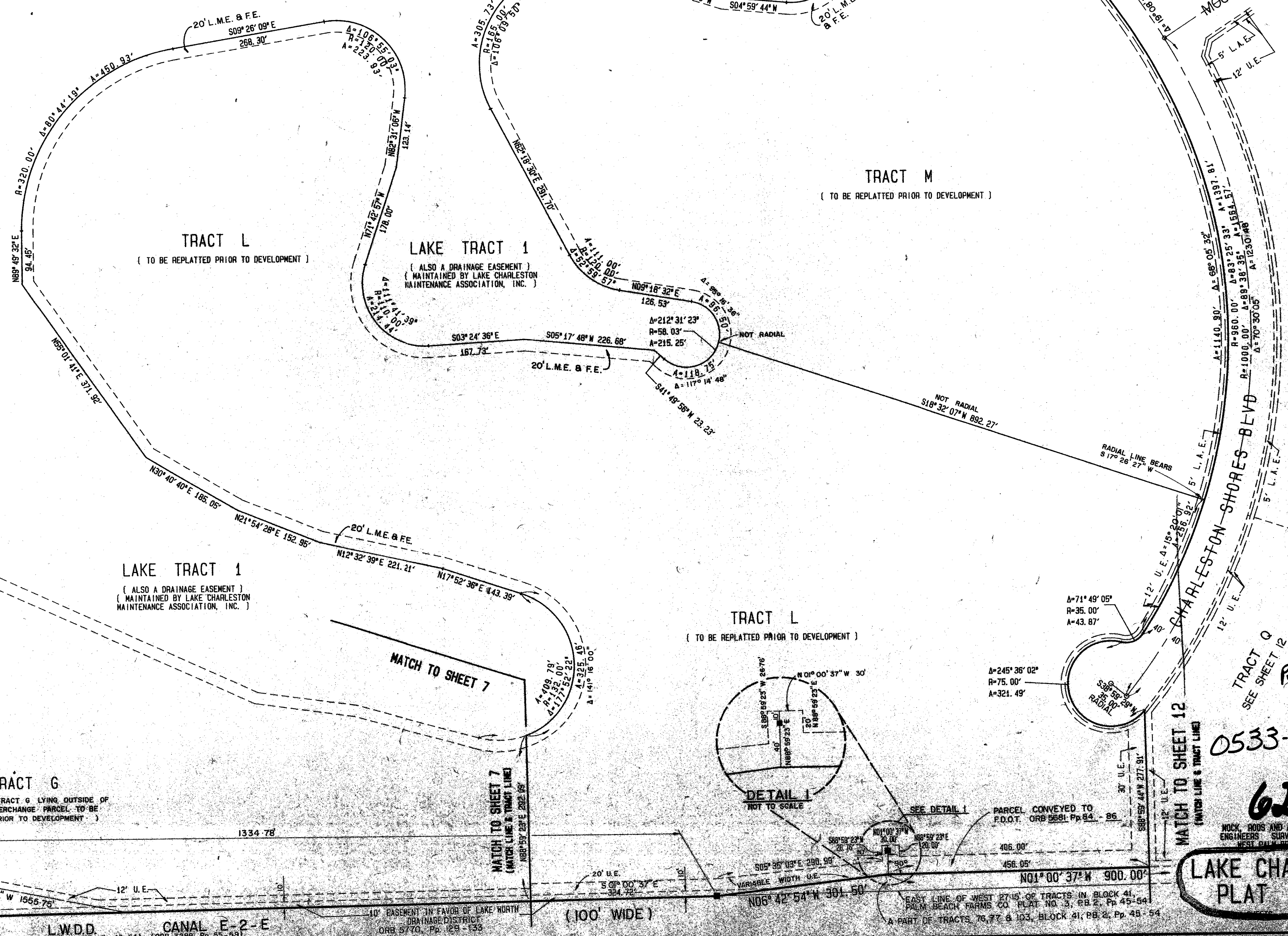
TRACT T
SEE SHEET 9



SHEET INDEX

NOTE: ALL PLATTED ROADWAYS CONTAINED IN BLOCKS 40 AND 41 (PALM BEACH FARMS CO. PLAT NO. 3, P.B. 2 Pp. 45-54) WERE ABANDONED BY RESOLUTION NO. R-78-771 (ORB 2891 p. 323)

LAKE TRACT 1
(ALSO A DRAINAGE EASEMENT)
(MAINTAINED BY LAKE CHARLESTON MAINTENANCE ASSOCIATION, INC.)



TRACT R
SEE SHEET 12

TRACT Q
SEE SHEET 12

0533-004

62/62

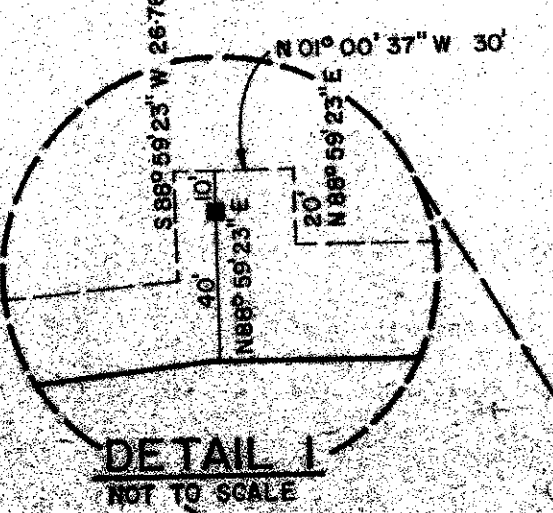
LAKE CHARLESTON
PLAT NO. 3

34,579,919
185A
RTS
33467
8674
TR 2 439

This instrument was prepared by Phillip W. Faulk
in the Office of Meck, Ross & Assoc., Inc., 5720 Corporate
Way, West Palm Beach, Florida 33407 (407 683 3113)

MECK, ROSS AND ASSOCIATES, INC.
ENGINEERS SURVEYORS PLANNERS
WEST PALM BEACH, FLORIDA

PARCEL CONVEYED TO
F.D.O.T. ORB 5881 Pp. 84-86
EAST LINE OF WEST 27-15 OF TRACTS IN BLOCK 41,
PALM BEACH FARMS CO. PLAT NO. 3, P.B. 2, Pp. 45-54
A PART OF TRACTS 76, 77 & 103, BLOCK 41, P.B. 2, Pp. 48-54



L.W.D.D. CANAL E-2-E
(ORB 3288 Pp. 49-54) (ORB 3289 Pp. 45-49)
ORB 5710, Pp. 124-133